



Working towards being more inclusive

Disability and Inclusion Strategy

Highlight Report No 26 in brief - July 2020



States of
Guernsey

The work streams below are still being developed:

<div> <div>Significant issues</div> <div>Some issues / risks</div> <div>On track</div> <div>Not Started</div> </div>	Discrimination Legislation	ESS
	Equality & Rights Organisation	ESS
	Information and Awareness-Raising	ESS
	Capacity Legislation	HSC
	Safeguarding Vulnerable Adults	HSC
	Framework for People with Speech Language and Communication Needs	HSC
	Framework for People with Learning Disabilities	HSC
	Supported and Mainstream Employment	ESS
The States of Guernsey is not in a position to seek the extension of the ratification of the UNCRPD until key work streams have been completed.	UN Convention on the Rights of Persons with Disabilities (UN CRPD)	ESS

The work streams below are complete and now live:

See each work stream status for further details.

Review of States' Obligations

(implementation now rests with States of Guernsey)

Framework for People with

Dementia (implementation now rests with HSC)

Information and Awareness-

Raising (for businesses in Guernsey delivered through GET)

Framework for People with

Autism (implementation now rests with HSC)

Discrimination Law

Talks took place about the proposals for the new law. The States members and charity groups went to the talks.

The States will debate the proposals for the new law in July.



Equality and Rights Organisation

This organisation would help everyone to understand how to act within the Law. The States will now debate the proposals in July.



Information and news

The island wide election will take place in October.

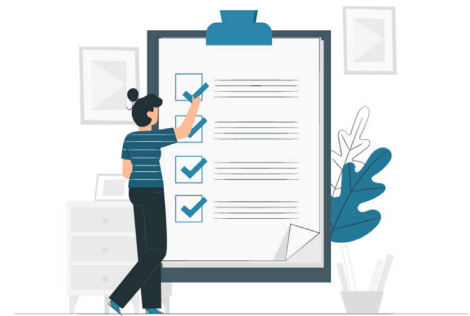
Easy read documents will be written to help people to vote.



The hidden disability training has been updated. It now includes stories from islanders about their disabilities.



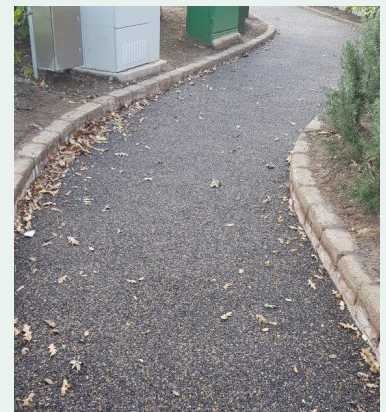
The States community survey asks questions about what lockdown was like for you. This was available as a paper form and an easy read form. The survey is now closed.



South plantation - The step has been replaced with a ramp. This is easier for wheelchair users.



Before



After

The Crossing has also been updated.



Pembroke Bay

The slipway has been improved to give easier access to the beach.

A beach wheel chair will be at the beach for people to borrow.

A new blue badge parking space will be next to the slip way.



The States Disability report for 2019 was published.

It has news about changes and improvements that have been made in lots of different departments.



Framework for people with Dementia

People with dementia found lockdown very difficult. They couldn't have family visits and they couldn't understand why. Services for people with dementia have now started again.



If you would like further
information please contact:

Gill Evans - States Disability Officer

Edward T Wheadon House
The Truchot
St Peter Port
GY1 3WH

Email: **Gill.Evans@gov.gg**
Telephone: **01481 732557**